

# DOTZU

## Product Catalogue





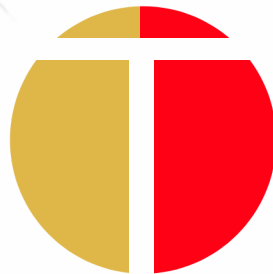
# ABOUT US

Dotzu specializes in offering a wide range of **high-quality Japanese products**, including hidden gems exclusive to the company through its strong connections in Japan.

With professional teams operating from offices in Japan and Singapore, Dotzu delivers integrated solutions with exceptional service quality.

## CONNECTING YOU

To the hidden gems from Japan



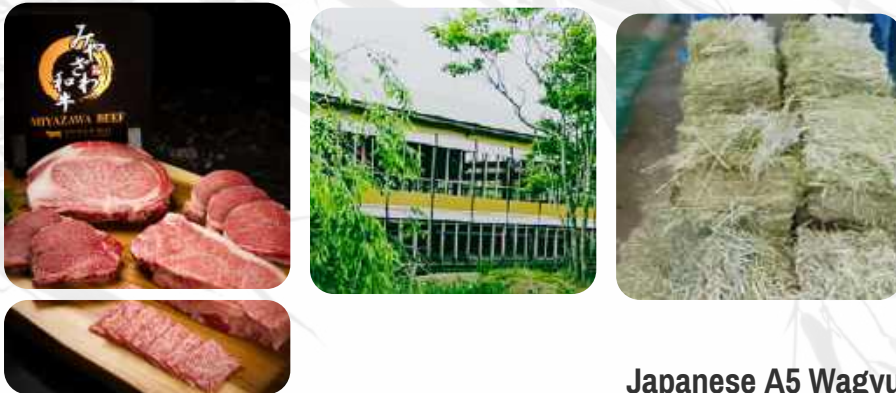
D O T Z U



# OUR PRODUCTS



**Frozen | RTE Delights**



**Japanese A5 Wagyu**



**Beverage Selections**



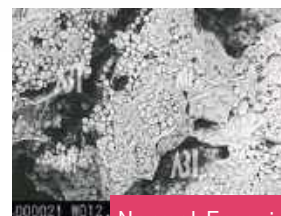
# FROZEN | READY-TO-EAT DELIGHTS



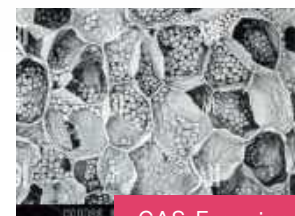
Crafted for both convenience and excellence, our products **empower chefs** in restaurants and hotels to effortlessly create and serve artisanal cuisine.



Advanced freezing techniques in Japan are expertly designed to preserve the unique qualities of each food. Innovations like **Cells Alive Freezing Technology** ensure that frozen products retain their freshness and authentic flavor. By minimizing cell damage, this cutting-edge approach allows each item to return to its **'freshly prepared'** state upon thawing.



Normal Freezing



CAS Freezing



# FROZEN | READY-TO-EAT DELIGHTS



**81263** Gourmet Sesame Blend  
A: 45g x 12 入



**83679** Hajikami in bottle  
**83671** Hajikami in bags



**41880** Lily Bulb in Sakura Cut  
A: 100g x 200 入



**41889** Lily Bulb Momiji Cut  
A: 100g x 200 入



**90907** Tenshi no Ebi  
A: 10g x 100 入



**40626** Shrimp Scampi  
A: 200g x 80 入 x 2 入



**40984** Sea Bream Soft Roe  
A: 10g x 100 入



**17320** Cod Soft Roe  
A: 10g x 100 入



**70938** Kintoki Carrot Ume Cut (L) & (S)  
A: 100g x 20 入



**62867** Golden Arrowhead  
A: 100g x 10 入



**70974** Pumpkin in Fuji cut  
A: 100g x 20 入



**70989** Winter Melon Uchiwa Cut  
A: 100g x 20 入



**60930** Strained Yuzu Purée  
A: 100g x 10 入



**10819** Strained Zunda Purée  
A: 100g x 10 入



**42086** Truffle Soy Sauce  
A: 100g x 20 入 x 2 入



**42614** Uni Sauce  
A: 1.45g x 20 入



**94393** Bite size Tofu Dengaku  
A: 100g x 100 入



**64880** Yuzu Miso Dengaku  
A: 100g x 100 入



**62680** Bamboo Zunda  
A: 100g x 20 入



**62792** Candied Sour Plum  
A: 100g x 20 入



**10900** Caramelized Young Peach  
A: 100g x 20 入



**13818** Yuzu Cup  
A: 100g x 20 入



**46280** Potato Case  
A: 100g x 100 入



**64277** Monaka Koume  
A: 100g x 20 入



**77712** Raw Scallop & Ginger Mix  
A: 100g x 100 入



**77713** Scallop & Seaweed with Yuzu Pepper  
A: 100g x 100 入



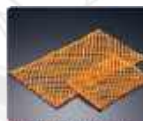
**40180** Tako (Octopus) Wasabi  
A: 100g x 100 入



**10480** Whale with Uni & Mental  
A: 100g x 100 入



**60818** Tiger Marron  
A: 100g x 100 入



**42274** Veg Sheet (Tomato)  
A: 100g x 100 入



**12817** Veg Sheet (Pumpkin)  
A: 100g x 100 入



**12801** Veg Sheet (Spinach)  
A: 100g x 100 入



**77341** Surf Clam Wasabi Salad  
A: 100g x 100 入



**77342** Surf Clam with Sesame Salad  
A: 100g x 100 入



**66173** Fugu Sashimi & Uni  
A: 100g x 100 入



**77027** Octopus with Basil Sauce  
A: 100g x 100 入



**64741** Lotus Zunda Fritter  
A: 100g x 100 入



**70812** Bamboo Yuzu  
A: 100g x 100 入



**10000** Premium Bamboo Dango  
A: 100g x 100 入



**70814** Bamboo Black Sesame  
A: 100g x 100 入



**30167** Okra and yuba with Grilled Wasabi  
A: 100g x 100 入



**66260** Crispy Pollock Roe Salad  
A: 100g x 100 入



**67245** Arare Shrimp Ball  
A: 100g x 100 入



**64406** Eggplant & Shrimp Stuffed Tempura  
A: 100g x 100 入



**60101** Grilled Flounder on Hoba Leaf  
A: 100g x 100 入



**67900** Saikyo-Yaki Black Cod  
A: 100g x 100 入



**63676** Marinated Red Fish in Teriyaki Sauce  
A: 100g x 100 入



**67197** Grilled Yellowtail with Teriyaki Sauce  
A: 100g x 100 入



**64572** Kyoto-style sesame tofu  
A: 100g x 100 入



**64573** Kyoto-style sesame tofu (black sesame)  
A: 100g x 100 入



**67408** Valencia Orange Tart  
A: 100g x 100 入



**12980** Bamboo Leaf  
A: 100g x 100 入



**62310** Winged Spindle Tree  
A: 100g x 100 入



**62716** Mediterranean Veg Terrine  
A: 100g x 100 入



**62818** Scallop & Mushroom Terrine  
A: 100g x 100 入



**62011** Shrimp & Asparagus Terrine  
A: 100g x 100 入



**88839** Paper Mat (Ume&Tsukaki)  
A: 100g x 100 入



**88840** Paper Mat (Momiji)  
A: 100g x 100 入



**71800** Blue Twin Boat  
A: 100g x 100 入



**69935** Rainbow Paper  
A: 100g x 100 入



**88860** Bamboo Leaf  
A: 100g x 100 入



**71801** Sakura Sakura  
A: 100g x 100 入



**71802** Transparent Leaves (L)  
A: 100g x 100 入



**71803** Chestnut Mont Blanc  
A: 100g x 100 入



**71804** Tiramisu  
A: 100g x 100 入



**71805** Tiramisu  
A: 100g x 100 入



**71806** Tiramisu  
A: 100g x 100 入



**71807** Tiramisu  
A: 100g x 100 入



**71808** Tiramisu  
A: 100g x 100 入



**71809** Tiramisu  
A: 100g x 100 入



**71810** Tiramisu  
A: 100g x 100 入



# JAPANESE A5 WAGYU



## Approach of Quality Over Brand



At our core, we believe that true excellence in Wagyu lies not just in the brand name but in the dedication and expertise behind each cut of beef. Hence we meticulously **select Wagyu by the farm** rather than the brand—ensuring superior quality, consistency, and authenticity in every bite.

## The Expertise Behind Dotzu's Wagyu Selection

At Dotzu, we take pride in working with **a certified and licensed bidder** in Japan's elite meat markets, who is a trusted authority in the world of premium Wagyu selection. His unparalleled skill in assessing Wagyu fat quality through touch reflects an extraordinary level of expertise—allowing him to hand-select the finest cuts with perfect marbling and fat composition.



# MIYAZAWA WAGYU

*Excellence in every cut*



全国肉用牛枝肉共励会優秀賞受賞



One of our standout selections is **Miyazawa Wagyu**, an esteemed brand of Japanese Black cattle sourced exclusively from a single boutique farm in *Chiba Prefecture*, Japan. Fully managed by Miyazawa Nousan, this farm is dedicated to producing exceptional Wagyu through a combination of traditional craftsmanship and advanced, data-driven care techniques.

At the heart of this operation is Mr. Miyazawa, a seasoned expert in cattle breeding and health management, who oversees every stage of the process—from raising and nurturing the cows to ensuring their optimal well-being until shipment.

His hands-on approach guarantees a level of precision and attention to detail that mass-market brands simply cannot replicate.

Miyazawa Wagyu's excellence has been nationally recognized, with the farm earning **"The Excellence Award" at Japan's prestigious National Carcass Competition** in its very first participation—an extraordinary achievement that highlights its commitment to top-tier cattle-raising practices.

By choosing Miyazawa Wagyu, you will experience **the pinnacle of Wagyu craftsmanship**, where tradition meets innovation to create consistently superior beef with unparalleled flavor, texture, and quality.



# MIYAZAWA WAGYU

## GALLERY





# Halal Fiber Tea | Coffee



Sourced from the finest ingredients and Halal-certified, our premium **inulin-contained** green tea and coffee nurtures a harmonious gut microbiome by supporting the growth of beneficial flora. It promotes bifidobacteria proliferation, fostering an optimal intestinal environment for enhanced digestive well-being.



**Fiber Green Tea Powered Drink**  
3.4g x 40 sachets



**Fiber Coffee Powered Drink**  
3.4g x 40 sachets



# Halal Japanese Tea



Experience the rich flavors of Sencha, Hojicha, and Genmaicha, beautifully packaged in tea bags adorned with unique Ukiyo-e patterns, offering both a visual and sensory journey with every brew.



With our uniquely designed tea bags with various Ukiyoe prints, we have carefully selected the best tea leaves from Shizuoka and Miyazaki prefecture under the tea specialist's advisory.



**Ukiyoe Sencha Tea Bag**  
40g (2g×20pcs)



**Ukiyoe Hojicha Tea Bag**  
40g (2g×20pcs)



**Ukiyoe Genmaicha Tea Bag**  
40g (2g×20pcs)



# Wellness tea



**Sweet Tea Bag**  
1.5g x 30bags



**Eucommia Tea Bag**  
2.5g x 30bags



**Guava Leaf Tea Bag**  
2.5g x 30bags



**Ginger-Scented  
Body Relief Tea Bag**  
2g x 20bags



**Blend Rooibos  
Tea Bag**  
2g x 20bags



**Persimmon Leaf  
Tea Bag**  
2g x 30g



**Hojicha Digestive  
Tea Bag**  
5g x 30bags





## SWEET TEA (TEN-CHA)

A natural delight without added sugar! Made from popular sweet tea leaves of the genus *Rubus* in the Rosaceae family, it's sweetened by nature itself.

Perfect for sweet-toothed folks watching their diet.



## EUCOMMIA TEA

Eucommia (Du Zhong) leaves? They're like health superheroes! They tackle everything from stress to aging, even sorting out digestion, chilly toes, and those pesky shoulder knots. Talk about a health all-rounder!



## GUAVA LEAF TEA

Guava tea has this cool trick - it slows down how fast your body absorbs sugar from food, giving you a smoother ride without those sudden blood sugar spikes after meals!





Based on Indian black tea, blended with carefully selected ingredients such as ginger, yuzu, chili pepper, and mugwort.

A unique blend with a hint of spiciness from the chili pepper. Chili peppers contain capsaicin, ginger contains gingerol, mugwort contains chlorophyll, and yuzu contains polyphenols.



Crafted from the finest rooibos tea, delicately blended with naturally Sweet Tea (Amacha) and a hint of fragrant lemongrass, this exquisite infusion offers a smooth, well-balanced taste.

Perfect for savoring hot or cold, anytime you desire.



**Ginger-Scented  
Body Relief Tea Bag**  
2g x 20bags



**Blend Rooibosti  
Tea Bag**  
2g x 20bags





Rich in vitamin C, it outshines lemons by 20 times, making it excellent for skincare by reducing dark spots and acne scars.

It also boosts immunity and helps prevent hypertension, promoting overall wellness.



**Persimmon Leaf Tea Bag**  
2g x 30g



This luxury blend includes candle bush for its high dietary fiber, along with hibiscus, lemongrass, and rosehip for a soothing sweet flavor.

Peppermint adds a refreshing touch, making it a delightful option for wellness and indulgence.



**Hojicha Digestive Tea Bag**  
5g x 30bags



# Specially Blended Tea



Infused with exceptional versatility, “Ochappi” redefines refreshment for any occasion.

Perfectly suited for water, soda, or alcohol, it adds a unique twist to every sip.

Effortlessly prepare cold brews or craft exquisite tea cocktails, transforming ordinary moments into extraordinary experiences.



**Ochappi Butterfly Pea Tea Bag**  
125g (50pcs)

- Color changes when adding lemon
- Non-caffeine
- Honey Essence
- Citric Acid





**Ochappi Hibiscus Bag**  
125g (50pcs)

- Collagen
- Non-caffeine
- Honey Essence
- Citric Acid



**Ochappi Mandarin Orange Tea Bag**  
125g (50pcs)

- Tumeric
- Non-caffeine
- Honey Essence



**Ochappi Butterfly Pea Tea Bag**  
125g (50pcs)

- Color change when adding lemon
- Non-caffeine
- Honey Essence
- Citric Acid



**Ochappi Sencha Tea Bag**  
125g (50pcs)



**Ochappi Genmaicha Tea Bag**  
125g (50pcs)



# TRUSTED BY MANY

Collaborating with a diverse range of clients including country clubs, restaurants, and retailers to deliver customized solutions that cater to their unique needs, enhance their operations, and drive success across multiple industries.



## MARKETING & OPERATIONAL SUPPORT

Dotzu supports you with tailored marketing and operational support, creating impactful campaigns, enhancing efficiency and seizing opportunities for sustainable success.



## PRODUCT EXCLUSIVENESS

Connecting you to artisanal, high-quality products available exclusively through its trusted network.



# CONTACT US

**Rie Miura**  
**Sales Director**  
rie.m@dotzu.sg  
9383 7531

**Mariko Yagisawa**  
**Senior Marketing Manager**  
mariko.y@dotzu.sg  
9620 9867

**Denise Che**  
**Sales Manager**  
denise.c@dotzu.sg  
8891 1046

**Sing Nie**  
**Operations Manager**  
singnie.l@dotzu.sg  
9829 9977



# Dotzu Singapore Pte Ltd

3 Philip Street

#17-01 Royal Group Building

Singapore 048693



D O T Z U